

- Tél. : +33(0)1 49 35 08 54 - cemom@cemom.fr

### Product features:

- completely concealed hinge,
- 3D adjustable (vertical  $\pm 2$  mm, horizontal  $\pm 2$  mm, depth  $\pm 1$  mm),
- slide bearings - do not require lubrication,
- right and left doors applicable,
- main dimensions: height 111,5 mm, width 29 mm, depth of door side 36 mm, depth of frame part 21 mm
- distance between bodies 19 with adjustment  $\pm 1$  mm

**Successfully passed 400 000 open/close cycle tests with load 80 kg**

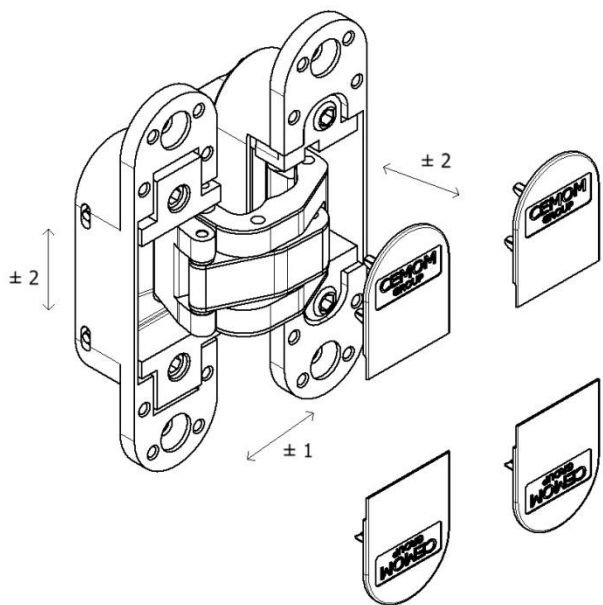
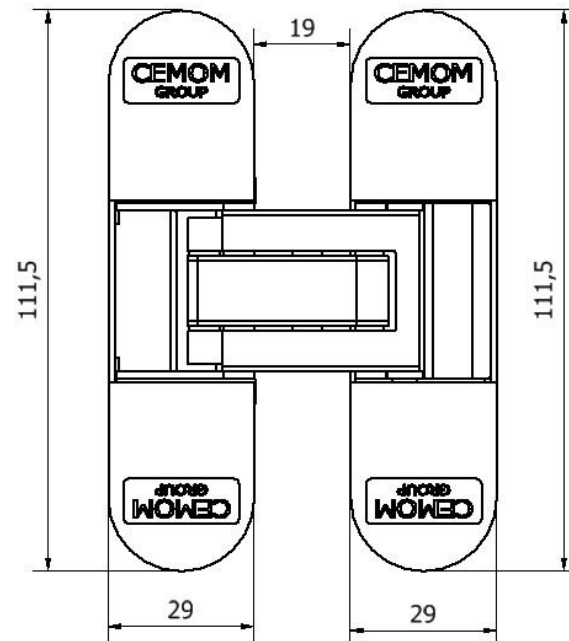
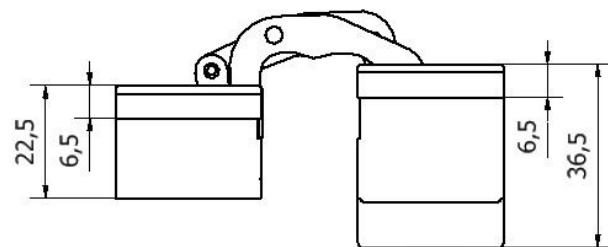
**Classification according EN 1935: 3 7 4 0 1 0 0 11**



FRAME SIDE

DOOR SIDE

### ADJUSTMENT METHODS



To make adjustments will be needed 4 mm Allen key. Adjustment is corrected when all hinges carrying the load.

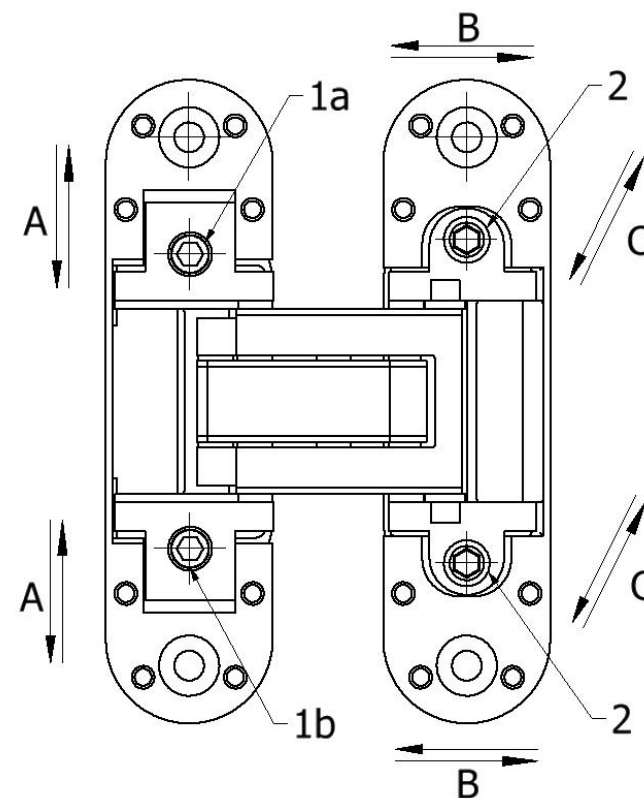
A – vertical adjustment – range  $\pm 2$  mm

First make sure that the top adjustment screw (1a) is on par with the front surface of the hinge - if not must unscrew it for this position. Adjust the hinge by turning bottom adjustment screw (1b). After finished adjustment tighten the top adjustment screw (1a).

B – depth adjustment – range  $\pm 1$  mm

C – horizontal adjustment – range  $\pm 2$  mm

Depth adjustment and horizontal adjustment takes place simultaneously. Adjust the hinge by turning alternately of both eccentric screws (2).

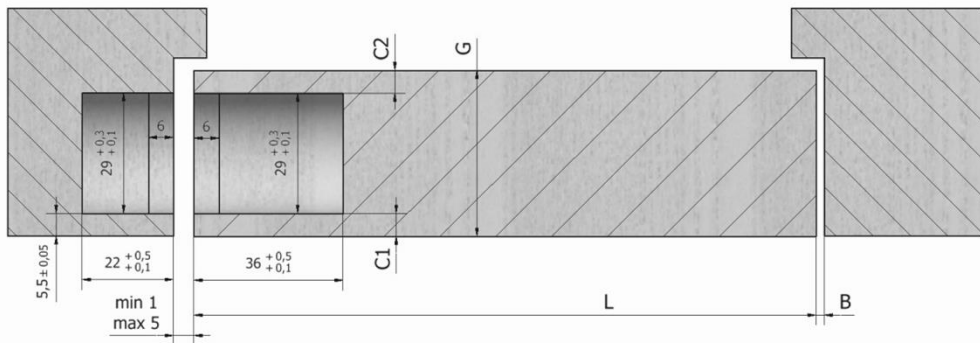


With correct adjustment (all hinges carrying the load), the suggested admissible weight of a door depending on the number of hinges and the door width, at the door height of 2000 mm minimum has been presented in the table. The first door should always be checked.

Number of hinges	Width of door "L" [mm]			
	700	800	900	1000
2	88 kg	84 kg	80 kg	72 kg
3	100 kg	96 kg	90 kg	80 kg
4	110 kg	106 kg	100 kg	90 kg

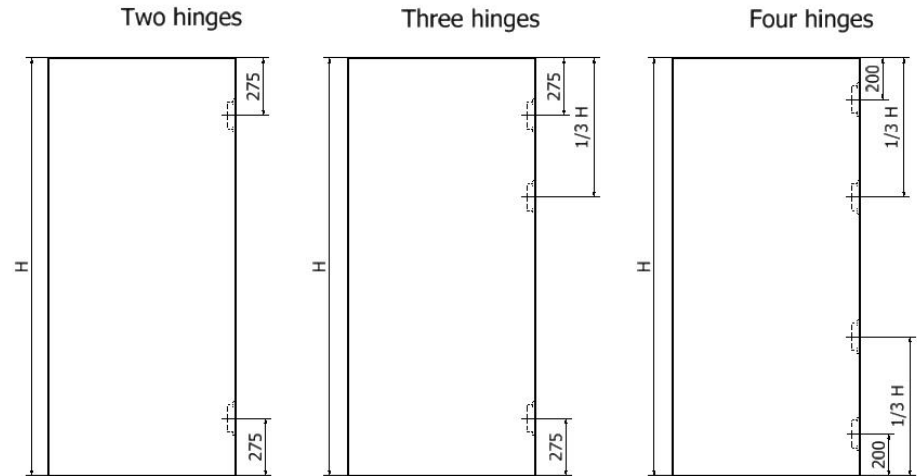
Position of the hinge in relation to the required dimensions of the door and the frame.

Thickness of the door "G"	Dimension C1	Dimension C2	Width of the door "L" [mm]			
			700	800	900	1000
			Minimum gap "B"			
40	5,5mm	5,5mm	2mm	2mm	2mm	2mm
60	5,5mm	25,5mm	4mm	3mm	3mm	3mm
80	5,5mm	45,5mm	6mm	5mm	5mm	4mm



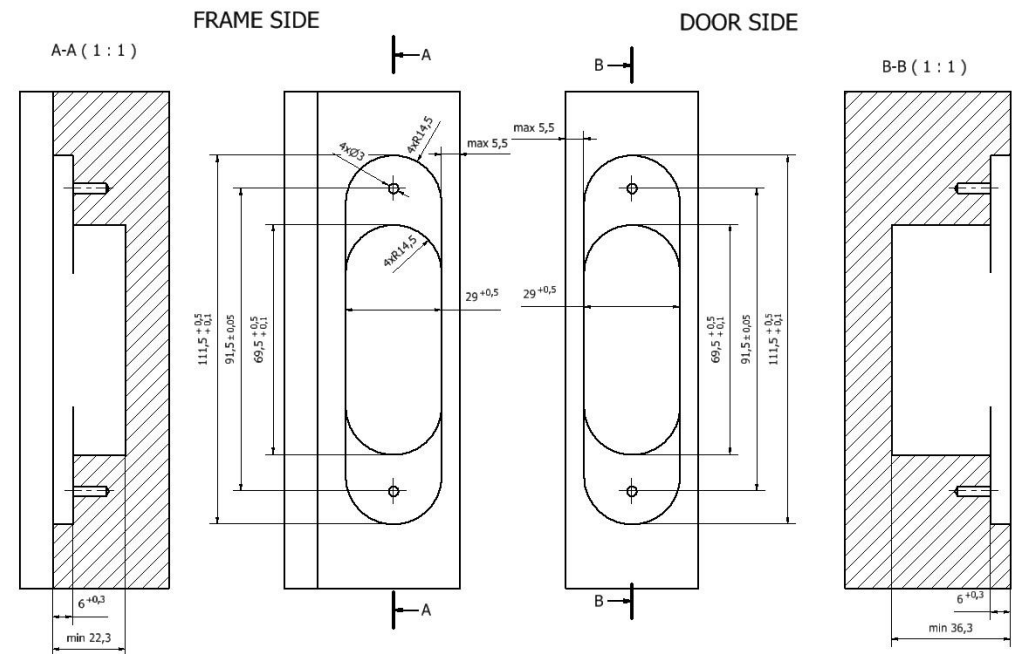
3/4

## SUGGESTED ARRANGEMENT OF HINGES



Hmin = 2000

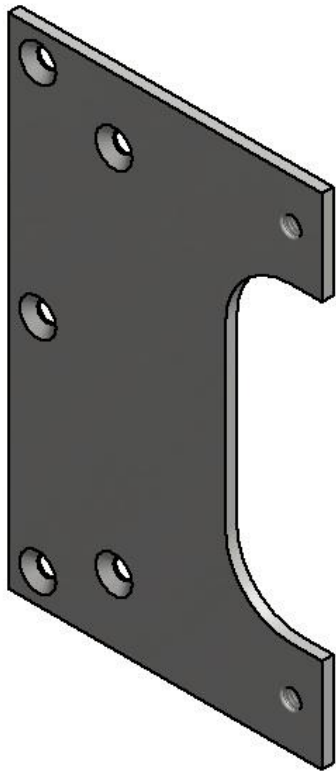
## MILLING DIMENSIONS



# Mounting accessories

Mounting plate

1078-09-00/B



jig for milling of slots without use of CNC machine

S ESTETIC 80(80/A)-00-00

